

AGENDA

Meeting: CALNE AREA BOARD
Place: Beversbrook Sports Facility, Beversbrook Road, Calne, Wiltshire,
SN11 9FL
Date: Tuesday 19 April 2011
Time: 7.00 pm

Including the Parishes of Calne North, Calne Rural, Calne South and Cherhill, Calne Central and Calne Chilvester and Abberd

The Area Board welcomes and invites contributions from members of the public. The Chairman will try to ensure that everyone who wishes to speak will have the opportunity to do so.

If you have any requirements that would make your attendance at the meeting easier, please contact your Democratic Services Officer.

Fairtrade refreshments and networking opportunities will be available from 6.30 pm.

Please direct any enquiries on this agenda to Alexa Smith (Democratic Services Officer), on 01249 706610 or alexa.smith@wiltshire.gov.uk

or Jane Vaughan (Calne Community Area Manager), on 01247 721447 or jane.vaughan@wiltshire.gov.uk

The papers connected with this meeting are available on the Council's website at www.wiltshire.gov.uk

Press enquiries to Communications on direct lines 01225 713114 / 713115.

Wiltshire Councillors

Cllr Alan Hill, Calne South and Cherhill
(Chairman)
Cllr Christine Crisp, Calne Rural (Vice
Chairman)
Cllr Chuck Berry, Calne North

Cllr Howard Marshall, Calne Central
Cllr Anthony Trotman, Calne Chilvester
and Abberd

Items to be considered	Time	
<p>1. Chairman's Welcome and Introductions (<i>Pages 1 - 2</i>)</p> <p>2. Apologies for Absence</p> <p>3. Minutes (<i>Pages 3 - 10</i>)</p> <p>To approve and sign as a correct record the minutes of the meeting held on 8 February 2011.</p> <p>4. Declarations of Interest</p> <p>Councillors are requested to declare any personal or prejudicial interests or dispensations granted by the Standards Committee.</p>	7.00 pm	
<p>5. Chairman's Announcements (<i>Pages 11 - 12</i>)</p> <p>The Chairman will provide information about end of life care and digital inclusion. There was also a spotlight on the Area Board at the community hub and there was a trailer in Calne High Street regarding the Area Board on Friday 15 April from 10.00 am until 2.00 pm.</p>		7.10 pm
<p>6. Partner Updates (<i>Pages 13 - 26</i>)</p> <p>To receive an update from the partners listed below:</p> <ul style="list-style-type: none"> a. Wiltshire Police b. Wiltshire Fire and Rescue Service c. NHS Wiltshire – to include a pharmacy update from Northlands Surgery d. Calne Community Area Partnership – to include progress on the CAP (Community Area Plan) agreement and a presentation from Friends of Abberd Brook e. Calne CAYPIG (Community Area Young People's Issues Group) f. Town and Parish Councils. 		7.20 pm
<p>7. Fairtrade Presentation</p> <p>Collette Som will speak briefly about Fairtrade in the Calne Community Area.</p>		7.40 pm

8.	<p>Your Local Issues</p> <p>Councillors will provide an update on community issues and progress on Area Board working groups. This will include:</p> <ul style="list-style-type: none"> a. Skate board park working group b. Cycle network working group – to include the Calne area transport group c. Highways working group d. Turn off the lights working group. <p>Information will also be provided about Sandpit Road:</p> <p>Development of Sandpit Road was approved on appeal. The provision of pedestrian crossings and other improvements at the development will be funded by secured developer contributions. Community views identified by the Area Board will determine priorities for the area.</p> <p>It is proposed that the Area Board will include an agenda item on the next full Area Board agenda on 28 June 2011 to involve the community in a discussion about what these priorities should be.</p>	7.45 pm
9.	<p>Library Service Review</p> <p>A presentation to inform the Area Boards of the results of the proposals for the Library Service, agreed by Cabinet, following the Comprehensive Spending Review announcement in October 2011.</p>	8.00 pm
10.	<p>Consultation on Waste Sites</p> <p>Information will be provided about consultation on plans for waste disposal sites over the next 15/20 years.</p>	8.10 pm
11.	<p>Area Board Funding (<i>Pages 27 - 32</i>)</p> <p>To consider one application made to the Community Area Grants Scheme, as follows:</p> <p>Calne Archers – seeking £461.24 towards setting up an Archery club for all ages and abilities.</p>	8.30 pm
12.	<p>Calne Service Station, Oxford Road - Safe Delivery of Fuel</p> <p>The Murco company has been in conversation with Wiltshire Council officers and with Area Board councillors and the Calne Town Clerk about concerns over the safe delivery of fuel to their service station on the Oxford Road, Calne. In order to progress</p>	8.50 pm

this matter in a way that is both safe and which avoids a loss of fuel for local people, it is proposed that the Area Board requests that a temporary, experimental and restricted permit is given to the company to enable them to leave Calne via Oxford Road/Wood Street/Curzon Street in contravention of the normal weight restriction on the highway at that point, approximately once a week between the hours of 5.30 am and 7.30 am, but not on weekends or public holidays.

This arrangement would be monitored and local residents would be contacted in order to assess the impact of this arrangement throughout the period of the temporary permit. The arrangement would last only until a permanent solution was identified.

13. **Close** (*Pages 33 - 34*)

9.00 pm

The Chairman will set out arrangements for the next meeting.

Future Meeting Dates

Tuesday, 3 May 2011

7.00 pm

Calne Town Hall

Tuesday, 28 June 2011

7.00 pm

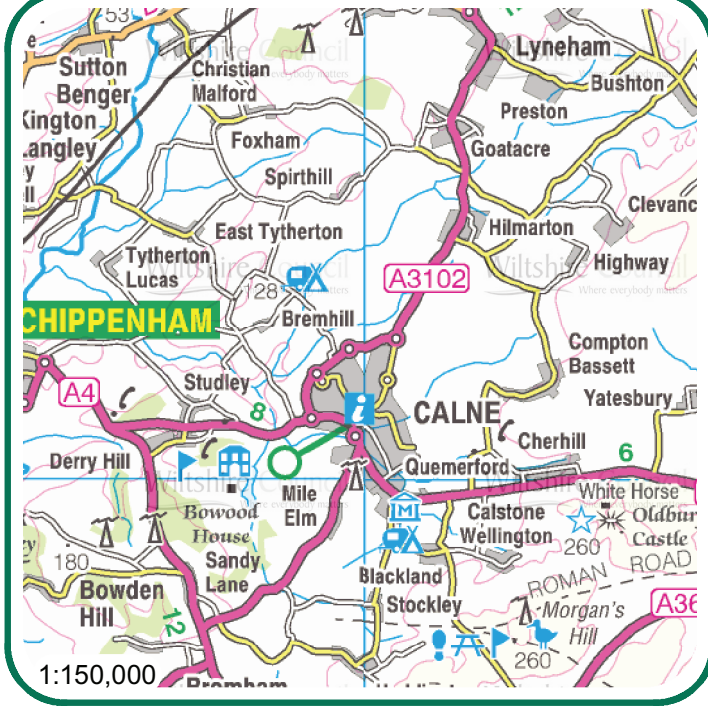
Calne Town Hall

Tuesday, 23 August 2011

7.00 pm

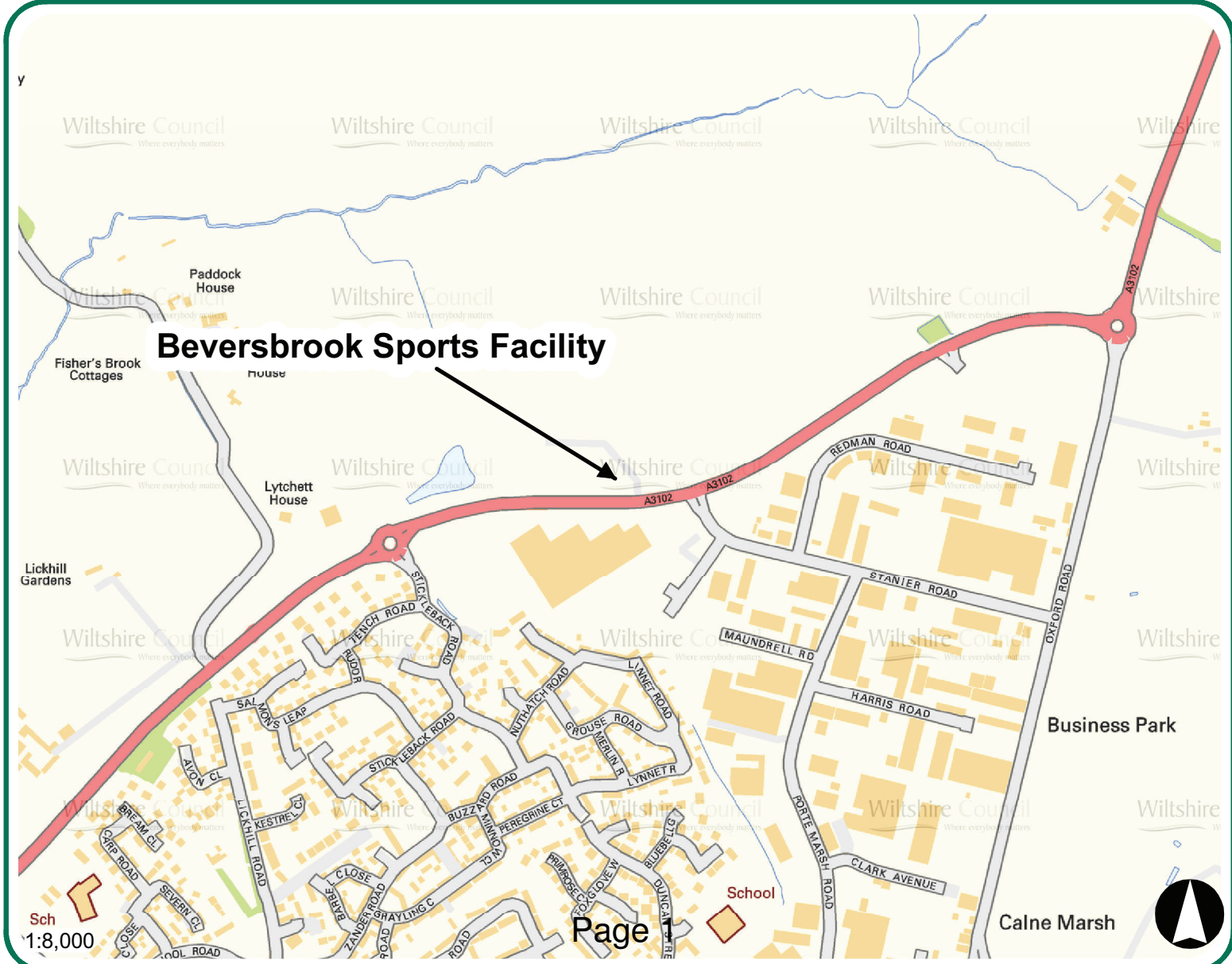
Cherhill Village Hall

Agenda Item 1



Beverbrook Sports Facility
Beverbrook Road
Calne
Wiltshire
SN11 9FL

Wiltshire Council
Where everybody matters



This page is intentionally left blank

MINUTES

Meeting: CALNE AREA BOARD
Place: Calne Town Hall, Bank House, The Strand, Calne, Wiltshire, SN11
0EN
Date: 8 February 2011
Start Time: 7.00 pm
Finish Time: 9.20 pm

Please direct any enquiries on these minutes to:

Alexa Smith (Democratic Services Officer), on 01249 706610 or alexa.smith@wiltshire.gov.uk

Papers available on the Council's website at www.wiltshire.gov.uk

In Attendance:

Wiltshire Councillors

Cllr Alan Hill (Chairman), Cllr Christine Crisp (Vice Chairman), Cllr Chuck Berry,
Cllr Howard Marshall and Cllr Anthony Trotman

Wiltshire Council Officers

Will Kay (Youth Development Coordinator), Alexa Smith (Democratic Services Officer)
and Jane Vaughan (Community Area Manager)

Town and Parish Councillors

Calne Town Council – Charles Boase, Roy Golding* and Colin Viner
Bremhill Parish Council – Stephen Cook
Calne Without Parish Council – Richard Aylen and Ed Jones*
Hilmarton Parish Council – Richard Broadhead

* = nominated representative

Partners

Wiltshire Police – Inspector Steven Cox
Calne Community Area Partnership – Francis Bosworth, David Evans*, Malcolm Gull
and Anne Henshaw

Total in attendance: 37

<u>Agenda Item No.</u>	<u>Summary of Issues Discussed and Decision</u>	<u>Action By</u>
1.	<p><u>Chairman's Welcome and Introductions</u></p> <p>The Chairman welcomed everyone to Calne Area Board and introduced the Councillors and Officers present. The Chairman welcomed Councillor John Thomson, Deputy Leader. He thanked those who had set up the Fairtrade promotion stand available to view before the meeting and explained that Calne Community Area Partnership would be interested in developing fair trade in the Community Area.</p>	
2.	<p><u>Apologies for Absence</u></p> <p>Apologies were received from Geoff Dickerson (Heddington Parish Council).</p>	
3.	<p><u>Minutes</u></p> <p>The minutes of the meeting held on 7 December 2010 were approved and signed as a correct record.</p>	
4.	<p><u>Declarations of Interest</u></p> <p>There were no declarations of interest.</p>	
5.	<p><u>Chairman's Announcements</u></p> <p>The Chairman drew attention to the written announcements included in the agenda pack. This included information on the results of the waste consultation, a proposed new Council-wide street trading scheme, fair trade fortnight, consultation on the Wiltshire childcare sufficiency assessment and the results of the leisure consultation. The Chairman also explained the new Chairman's announcements folder, with more detailed information, that was available to view at the meeting.</p>	
6.	<p><u>Partner Updates</u></p> <p>a. Councillor Chris Caswill spoke about proposed spending cuts to Wiltshire Police Authority. £15 million of savings were needed over the next four years (the current total budget for policing in Wiltshire was £107 million). Planned savings at present include nearly £4 million savings on general expenditure and £11 million from staff savings. There were no plans to change frontline numbers, there would be 11 Inspector led areas as now and Swindon and the County divisions were to be merged to give one Force</p>	

wide service delivery.

Councillor Caswill asked the meeting to take part in the consultation by completing the questionnaire cards that were available, visiting the Wiltshire Police Authority website to complete the survey there: www.wiltshire-pa.gov.uk, or calling 01380 734022 for a hard copy of the plans and questionnaire.

The written update from Wiltshire Police was circulated at the meeting (attached). The Chairman welcomed Inspector Steve Cox to the Calne Community Area and thanked Inspector Kate Pain for all her excellent work. Inspector Cox explained that detection rates appeared to fall in the report because local resolutions had been made. Progress had taken place on repeat offenders with one young male given a suspended sentence and directed to not enter a public house in Britain for a year. The reaction to the website www.police.uk, where a person could look up information on local crime and policing, had been largely positive. Inspector Cox demonstrated the electronic devices that had recently been issued to officers and explained what they could do to improve efficiency by allowing beat officers to spend less time on paperwork in the office.

- b. The written update from Wiltshire Fire and Rescue Service was noted.
- c. The written update from NHS Wiltshire was noted.
- d. The written update from Calne Community Area Partnership was circulated at the meeting (attached). The Chairman congratulated the new Vice Chairman of the Partnership, Emmy Butcher, on being elected to the post.
- e. Four young people from Calne Community Area Young People's Issues Group attended the Area Board meeting to report that the CAYPIG had held a dedicated Open Space meeting to discuss ideas for activities and events if they received funding and identified a suitable project. The Chairman and Councillor Marshall thanked the young people for their excellent presentation. The Chairman drew attention to the written report submitted by CAYPIG included in the agenda pack and the background to the available funding. At the Council meeting on 23 February 2010, Councillor Scott announced that it was intended to allocate approximately £100,000 across the eighteen Area Boards to allow for additional grants by each Area Board specifically

	<p>for children and young people’s projects or activities. The sum of money allocated to Calne Area Board as a result of this initiative was £4,285.</p> <p><u>Decision</u> That the Area Board commits a budget of £4,285 to a project that provides ‘things to do, places to go’ for young people from the Calne Community Area.</p> <p><u>Decision</u> That the Area Board delegates to the CAYPIG, with the support of the Youth Development Coordinator, the facility to plan and implement a programme of events through the Open Space Forum, providing they are within the allocated budget of £4,285. This is subject to an update report from the CAYPIG to each Area Board meeting detailing the progress of the project and, at the end of the project, an evaluation summary providing details of any additional transport arrangements implemented or creating barriers to inclusion.</p>	
7.	<p><u>Community Resilience - Town and Parish Council Emergency Plans</u></p> <p>Nick Bate, Emergency Planning Officer, gave a presentation on town and parish emergency plans. Given the recent bad weather, particularly rain and snow, the production of emergency plans was very relevant, and Town and Parish Councils were being asked to assist with this initiative.</p> <p>The plans were compiled using national ‘at risk’ data, as well as local risk information from the individual parishes, and a nominated person would take responsibility for preparing the plan and ensuring that it was kept up to date.</p> <p>The Government had produced a template to assist with the production of emergency plans, which would be circulated to Town and Parish Councils via their clerks.</p> <p>The Chairman thanked Nick for attending the meeting to highlight this issue.</p> <p><u>Decision</u> The Area Board would endorse the production of emergency plans by Town and Parish Councils.</p>	
8.	<p><u>Your Local Issues</u></p> <p>Councillors provided an update on community issues and progress</p>	

on Calne Area Board working groups.

- a. Councillor Marshall explained that the skate board park working group had a meeting with experts to look at designs and costings.
- b. Councillor Berry provided an update on the cycle network. The cycle path at Prince Charles Drive had been completed and dual use cycle path signs were in place at White Horse Way. There had been no movement yet on the Quemerford to Cherhill path or the Beversbrook Way path. The Calne Area Transport project to survey the town was underway and Councillor Berry would be arranging the next working group meeting shortly. Please contact Councillor Berry, on 01666 577765 or chuck.berry@wiltshire.gov.uk, if you would like to become involved in the working group.
- c. Councillor Crisp reported on the highways working group. This group had met with Wiltshire Council officers since the last Area Board meeting in order to progress the use of the Calne Area Board highways budget of £12,465 in the current financial year.

Mark Stansby, Senior Traffic Management Engineer, had delivered an assessment of the top five priority areas identified by Community Area residents and prioritised by the working group. These were:

1. A3102 Hilmarton, pedestrian crossing
2. Curzon Street/Wood Street, signing review
3. A4 Studley Crossroads, pedestrian crossing/lighting
4. A3102 Goatacre, pedestrian crossing
5. A4 Quemerford/Lake View, pedestrian crossing.

On the basis of the assessment, the working group asked the Area Board to endorse its recommendations regarding progressing schemes in the 2011/12 financial year.

Questions and comments raised from the floor included:

- Curzon Street traffic was caused by the decisions of local people in their vehicles
- Estimated costings were high
- Concern over the use of the consultant Mouchel

Decision

Councillor Thomson requested a breakdown of estimated costings from the highways team.

Decision

The Area Board would endorse the recommendations of the highways working group, as below:

- 1. Commission a topographical survey at Hilmarton and ask HAGGIS to carry out pedestrian count (estimated cost £2,500).**
- 2. Implement a new signing scheme to relieve Curzon Street (estimated cost £6,500).**
- 3. Prepare lighting scheme for pedestrian refuges at Studley (estimated cost £1,500).**
- 4. Request HAGGIS to carry out pedestrian count at Goatacre (no cost).**
- 5. Complete feasibility study/pedestrian counts at Quemerford/Lake View (estimated cost £2,000).**

The total cost to the Area Board would therefore be £12,500.

This included £6,000 of survey work, which was more than the working group would like, but surveys were required before alterations to the highways could be made. It was due to the generous offer of HAGGIS that Calne was able to keep these costs much lower than in most areas. The recommendations secured one complete project, new signage to attempt to reduce the Curzon Street congestion, and the necessary preparation for three others, which the group would hope to progress in future years. This would begin to address the highest priority road safety and traffic issues in the Community Area that residents had brought before the Area Board.

- d. Jane Vaughan, the Community Area Manager, gave an update on the turn out the lights project. Three priority sites for the project had been identified at the last Area Board meeting; from Quemerford to Cherhill, from Greenacres Way to Beversbrook Road and on the A4 through Calne. Jane was waiting for confirmation that the sites were able to be part of the scheme. She had also received information that suggested there may be the opportunity to implement additional sites and Cherhill Parish Council and Yatesbury had expressed an interest in the project. The Parish Council and the Partnership were asked to work with the Area Board to undertake a simple survey of both places, to make sure that residents were happy to be included.

9.	<p><u>Area Board Funding</u></p> <p>Consideration was given to two applications made to the Community Area Grants Scheme.</p> <p><u>Decision</u> Calne Twinning Association were awarded £918 towards the production of a promotional leaflet to extend the reach of the twinning association out to a wider range of people in the Calne Community Area.</p> <p><u>Reason</u> <i>The application meets the 2010/11 grant criteria and it promotes a sense of community identity, pride and cohesion.</i></p> <p><u>Decision</u> Wiltshire and Berkshire Canal Trust were awarded £1,783 towards the repair and refurbishment of Chaveywell Wharf, conditional upon the balance of funding being in place.</p> <p><u>Reason</u> <i>The application meets the 2010/11 grant criteria and it addresses ambitions in the Calne Community Area Plan to increase recreation land and facilities in the area.</i></p>	
10.	<p><u>Community Area Grant Scheme Feedback</u></p> <p>The meeting was asked to consider how best to receive feedback from organisations that had received Community Area Grants. Councillor Thomson commented that in Malmesbury a light touch approach was taken. Organisations who had received funding were not required to give a presentation at an Area Board meeting, but to submit a one page summary outlining the success of the project.</p> <p><u>Decision</u> Community Area Grant Scheme feedback would be considered further by Area Board members at the next Area Board Coordinating (ABC) meeting.</p>	
11.	<p><u>Cabinet Representative</u></p> <p>Councillor John Thomson provided an overview of his role as Deputy Leader and Cabinet member for Adult Care, Community Services and Libraries. He explained this encompassed Area Boards.</p> <p>Wiltshire Council was committed to retaining libraries and the mobile library service. Opening hours would be reassessed in the</p>	

	<p>context of neighbouring local authorities closing libraries. Input from volunteers and partnership working would be needed in small communities to keep their libraries open. Funding for libraries was in place and there was a budget of £750,000 for new books a year. Investment had been made in new technology, such as scanning systems, and more electronic books.</p> <p>Wiltshire was set to face a big increase in the number of older people in the county and had a ten year plan to improve services. Wiltshire Council was investing in keeping people in their homes with support for as long as possible, the next stage would be extra care in home and the final stage if needed would be residential care.</p>	
12.	<p><u>Close</u></p> <p>The Chairman asked if there were any outstanding items from the floor. Councillor Charles Boase of Calne Town Council advised that gas works were due to affect The Green and Church Street for over three weeks. Since parking was already difficult in this area, he asked if Wiltshire Council could arrange for residents who would be affected by this work to be allowed to park free in the Church Street car park. Councillor Thomson advised Councillor Boase to contact Councillor Richard Tonge, Cabinet member for Highways and Transport. The next Area Board meeting would be held at 7.00 pm on Tuesday 19 April at Beversbrook Sports Facility, with refreshments available from 6.30 pm.</p>	

Chairman's Announcements - 19 April 2011

End of Life Care: Dying Matters Awareness Week 16-20 May 2011

There's one thing we can all guarantee in life and that is one day we will die. We choose how we live and how we have our children, but often don't get around to discussing our future plans. Death remains a taboo subject, something we're all afraid or unwilling to talk about.

NHS Wiltshire, Wiltshire Council and local hospices are joining in with national events planned for 'Dying Matters' week 16-20 May. The aim being to raise awareness of how we can talk about planning for our future care and putting plans in place with our families.

Ask most people how they would like to die and most would say 'at home, or a hospice, and surrounded by the people that I love.' But fewer than half of us achieve that aim.

Planning for your future not only ensures your wishes will be respected but that your family and loved ones are taken care of and supported at a very difficult time.

You can also really support your family by writing a will; planning your funeral and putting into place a power of attorney for someone to look after your affairs should you become incapable.

Look out for Dying Matters events this May in your local area. There is also very good advice at www.dyingmatters.org.uk.

Digital Inclusion

Wiltshire Council's business plan for 2011-15 has prioritised a number of areas for investment, of which digital inclusion and supporting the rollout of superfast broadband for both business and home users is a key area. The Council has set the ambitious target of enabling 85% of all premises to be able to access superfast broadband (possibly 95% with additional funding) and for all premises able to receive standard broadband by 2015.

To help understand existing coverage and the requirements for the future, Wiltshire Council will be launching a superfast broadband survey for home and business users between 26 April and 3 June. This will allow people to say what types of services they can currently access over internet and how well their service performs. The survey will also ask about their views for getting superfast broadband in their community the future. This information will allow the council to better understand the demand for this service and where it will need to prioritise investment.

The council is keen to get as many responses as possible to help inform its rollout plans over the next 4 years.

The survey will be available on-line and also available as a printed document. Details are available from: www.wiltshire.gov.uk/digitalinclusion

Printed versions can be requested by calling and asking for the digital inclusion survey from the start date of the survey - 0300 456 0100

Results of the survey will be shared on the council web site in July, via the same link.

Crime and Community Safety Briefing Paper Calne Community Area Board April 2011



1. Neighbourhood Policing

Team Sgt: Phil CONNOR
Patrol Officer: Emma REED

Town Centre Team

Beat Manager – PC Hans MONAHAN

PCSO – Gaynor BENNETT

PCSO – Barry MUSSARD

PCSO – Shelly GRAY

PCSO - Nicole YATES (We welcomed PCSO Nicole Yates to the Town Centre Team in February and she has settled in very well and got stuck into police duties at Calne.)

Rural Team

Beat Manager – PC Alan BLAKE

PCSO – Sarah HARDWIDGE

We are also supported by a team of 3 Special Constables:

SPC – Millis MILLER

SPC - Daniel RUDDOCK

SPC - Elizabeth NORRIS

2. NPTs - Current Priorities & Consultation Opportunities:

Up-to-date details about Neighbourhood Policing Teams including team membership, current priorities and forthcoming community consultation events can be found on our Wiltshire Police Website.

□ Visit the new and improved website at: www.wiltshire.police.uk

- **Calne Town Priority – Anti-Social Behaviour in The Pippin, Calne town centre.** In recent weeks a trend has developed where a group of 13-15 year old young persons have been engaging in Anti-Social Behaviour. This has included underage drinking, spraying graffiti and being disrespectful to vulnerable members of the community. In response to this Calne Police will be liaising with our partner agencies and carrying out targeted foot patrols.

*****Important Update*****

On Monday 4 April the structure of our Neighbourhood Policing Teams (NPTs) is changing. Currently most NPT geographical areas do not align to local authority areas – known as community areas within the Wiltshire Council area and clusters within the Swindon Borough Council area. To help improve effective partnership working by defining the same geographical community areas, NPTs are being realigned to these council community areas /clusters.

This will result in the number of NPTs reducing from 76 to 27, larger but still local teams by bringing together neighbouring NPTs.

Calne will no longer be split in two as Town and Rural - we will just be known as one NPT.... Calne.

Police Authority Representative:

Please contact via Wiltshire Police Authority Tel. 01380 734022 or <http://www.wiltshire-pa.gov.uk/feedback.asp>

3. Performance and Other Local Issues:

The implementation of Local Resolution and Restorative Justice Project...

Local Resolution was introduced to Wiltshire Police last year and allows officers to use discretion to deal with matters there and then for the benefit of victims without unnecessarily criminalising those responsible for the offence. It promotes and is designed to provide a quick solution as it is rooted in commonsense. However more action is sometimes required to resolve some crime and anti-social behaviour.

Restorative Justice goes beyond Local Resolution in a number of ways. One of its central beliefs is that crimes cause harm – both to individuals and communities.

Restorative Justice is a process which brings people together, face to face in the so that harm can be addressed and repaired. One example of this....In February a group of youths were witnessed passing by a house that was being renovated in Calne, one of them threw a stone and it smashed a window. The owner of the property confronted the youths and one of them admitted responsibility.

PCSO Barry MUSSARD negotiated with all parties involved and the action agreed was that the youth responsible would attend the property on two days and carry out work on the renovation; he was also required to write a letter of apology. On speaking with the lady that reported the damage she stated that it was a successful result as she benefited from two days of labour and the offending youngster said that he enjoyed learning parts of the trade and took away with him skills for this type of working environment.

Restorative Justice is a way of engaging communities and working with them to find ways of understanding and to deal with issues that affect them. Anti-social behaviour falls directly into this category. It allows those who have been harmed to find some closure and put behind them fears they may have carried and it helps prevent re-offending by those who are responsible for causing the harm. If done effectively, it promotes a better view of the police by those in the communities they serve. More than 90 per cent of people in other parts of the country who participated in a restorative process facilitated by the police have confirmed this.

Bluez 'n' Zuz....

Calne held its 5th year anniversary Bluez 'n' Zuz Disco on Friday 11th February and are very pleased to announce that 249 youngsters attended which is a record for the town!! To celebrate this event we had a huge chocolate cake made by Trudy Mitchell of Jelly Cake, Calne and each child that attended was given a piece.

We would like to thank Wiltshire Fire and Rescue Service for supporting the disco by providing two of the Calne Crew to help supervise the event; we hope this partnership will continue for future discos. The team at Calne Police has enjoyed working with a variety of partnership agencies including the Wiltshire Youth Service, John Bentley School, Westlea Housing and Calne Town Council. We are also very grateful for the funding that we have generously received. It has not only provided an activity for the young people of Calne to look forward to but it has also helped to tackle Anti-Social Behaviour by interacting with, and providing guidance to, those who could be drawn to committing crime.

Calne Bluez 'n' Zuz Disco was originally set up in February 2006 at Bremhill View Social Club with around 40 youngsters attending. It then moved to the Town Hall in April 2008 and attracted over 100 young people! It quickly outgrew the hall and we moved again to our current venue at John Bentley School in July 2008.

The Discos are really important for the community as they provide a safe environment for young people to socialise, meet with friends and have fun. Bluez 'n' Zuz helps us to engage with young people between 11 and 16 years of age, giving them a chance to get to know their local police as individuals and showing that we are approachable. I think the number of attendees at Fridays Disco reflects how popular the discos are and the local youngsters enjoy the activities we provide for them.

Pubwatch....

The Pubwatch scheme in Calne is supported by PC Emma REED and it continues to perform well due to the monthly meetings being attended by all licensees. This has resulted in a drop in reported violent crime and an understanding from persons on the scheme that abusive and violent behaviour will not be tolerated. Information and photos are shared between local public houses for a safer social environment.

Cycling Operation @ John Bentley School...

Following numerous reports from The John Bentley School that pupils were cycling carelessly and dangerously outside the School, putting themselves and others at risk, Calne police decided to work in partnership with the school. We wanted to put a message out to parents and their children regarding 'Safer Cycling' before a major accident occurred and somebody became injured. PCSO Nicole YATES took responsibility of setting up the Cycling Initiative and managed to get the Local Cycling Shop S.E.S Cycles involved whereby they created vouchers for youngsters to get unsafe bicycles fixed.

Nicole has liaised with the school's deputy head and arranged two mornings whereby Officers from Calne Police would be present at the school gates checking the safety of pupil's bikes and looking for any faults. If any faults were found then the youngsters details were taken and a letter was sent home to the parents listing the faults found on their children's bikes with the voucher included giving them 28 days to get the bikes made legally safe to ride. The first was 28th February and the second morning was the 09th March. The children were very compliant and understood the importance of cycling safely to protect them and others from being injured or worse. The cycling initiative was very successful as 20 bikes were deemed unsafe to ride and parents therefore notified and reminded on the importance of letting their children ride to school on Legal road worthy bikes.

Calne Police are planning to do another morning to ensure the changes have been made after 28 Days. Nicole has also taken part in the John Bentley parents evening by doing a stand on bicycle safety and she has asked the Gazette and Herald to write an article publicising the success of the Cycling Initiatives.

Recent Partnership Working...

- One of our recently expired priorities was Anti-Social Behaviour in Shelburne Road, Calne. This was caused by a Prolific Priority Offender (PPO) that was a tenant in one of the houses here. Through closely working with local residents, the ASB area boards and also the fire service the male was evicted in February and moved away from Calne. It is believed he was responsible for metal thefts in the area and since his departure the number of these reported has dropped significantly.

- A male in his 20's that was released from prison in Dec of last year was sighted by the Calne CCTV operators stealing a bicycle from outside of Centre News in the town centre on Saturday 5th March. Local officers were able to identify him from this footage and on Wednesday 9th March he was monitored again by CCTV operators riding the stolen bicycle through Phelps Parade. They alerted Police officers at Calne Police station who immediately began searching for the male. Officers located the young male and approached him to make an arrest but the suspect assaulted one of the officers and made off on foot, they did however recover the stolen bicycle.

He has since been arrested for the Theft of a pedal cycle and assaulting a constable; he attended court on the 16th Of March and is currently being remanded in prison awaiting sentencing. This is an example of fantastic communication and partnership working between Calne Police and the local CCTV Operators.

Behind Bars...

A recent headline reads: **Calne teenager Jordan Sweetlove, described as a "one-man crime wave"** by his own defence lawyer, is facing prison after pleading guilty to a burglary and theft from a motor vehicle. Jordan Sweetlove, aged 19 years of age is currently the subject of an Anti-Social Behaviour Order (ASBO) and is known to local Police as a Prolific Priority Offender (PPO). He attended court on Mon 7th March 2011 and was charged after he was arrested a string of incidents in the early hours of Sat 5th March 2011.

He was caught by police after entering a home in Calne while the owner was sleeping and stealing the keys to a Volkswagen Golf, before making off in the car with an accomplice. The two later fled from police after being pulled over in Chippenham and Sweetlove was picked up at his home at around 5.30am.

He was also tied to the theft of a Tom-Tom satellite navigation system from a Honda Civic, on the same morning, after his front door keys were found down the back of the car seat. Sweetlove was charged with burglary and theft from a motor vehicle and pleaded guilty to both at North West Wiltshire Magistrates' Court on Monday.

He also pleaded guilty to a charge of breaching an anti-social behaviour order in relation to an incident on December 8th 2010.

Jordan SWEETLOVE has a long record of offending in the last five years therefore he has been remanded in prison and awaits sentencing.

Sergeants Message:

This report reflects just some of the positive partnership working and achievements over the past couple of months.

It is fair to say that the spate of burglaries over the months since January, has been one of our major priorities within the sector.

I can now tell you we have been working very closely with our priority Crime team and our Colleagues in General Police Duties to target suspects. There is much work still ongoing and it is likely there will be further arrests. The arrest, charge and subsequent remand of Mr Sweetlove has had a huge impact in reducing crime and the fear of crime within our community, and I am pleased to report we have seen a significant decrease in reported dwelling and non dwelling burglaries over the past weeks.

PC Reed and the NPT team continue to use every tool available to us in ensuring the Calne Pub watch scheme remains proactive and well supported, many of the Licensees have stated they feel extremely supported by the Police, and confident in challenging those persons who engage in alcohol related violent crime. The recent (and much publicised) case of Mr Warren Naldi, who was found guilty of assault, highlights the importance of Calne Pub watch scheme.

Mr Naldi was the subject of the calne Pub watch scheme when he managed to sneak into a Licensed premise, it was whilst he was inside the Licence premises he assaulted another drinker, resulting in injuries to the victim.

At Swindon crown Court the Judge imposed a one year prison sentence,(suspended for 2 years) £500.00 costs, curfew , supervision for 2 years **and a ban from all licensed premises for 2 years**. It goes without saying that our case file to the Crown Prosecution service made it clear Mr Naldi was the subject of the Calne Pub watch Scheme when he carried out this attack, the sentencing clearly reflects the circumstances at the time of the assault.

Our consultations at the community Hub, Police station and other locations continue to be well received by the community. Local consultation gives us the opportunity to have face to face meeting with members of our community who might just want some advise and do not want to phone the Police. We have been able to resolve many minor issues (particularly at the community Hub) and or sign post people to the right Agency that can deal with their issues.

I am considering increased consultation days at the Police station, and will keep you posted if this is something the community want .

Phil Connor

Police Sergeant, Calne Police Station.

CRIME & DETECTIONS FOR CALNE NPT

(1ST MARCH 2010 to 28TH FEB 2011 compared to previous year)

CALNE	CRIME				DETECTIONS	
	MAR 2010 - FEB 2011 of previous year				MAR 2010 - FEB 2011 of previous year	
	2009/10	2010/11	+ / -	% Change	2008/09	2009/10
Violence Against the Person	245	192	-53	-21.6%	53.5%	50.0%
Dwelling Burglary	44	59	15	34.1%	36.4%	20.3%
Criminal Damage	242	208	-34	-14.0%	16.1%	11.5%
Non Dwelling Burglary	119	135	16	13.4%	9.2%	3.7%
Theft from Motor Vehicle	50	65	15	30.0%	0.0%	3.1%
Theft of Motor Vehicle	9	13	4	44.4%	11.1%	15.4%
Total Crime	1046	1014	-32	-3.1%	30.2%	23.3%
County Division is compared with 15 most similar divisions in other Forces. Currently we are performing well e.g. ranked 1st (out of 15) for All Crime and 3rd (out of 15) for Violent Crime						

Anti-Social-Behaviour – reported incidents (Over the last 12 months)

JULY-SEPT 2009	OCT-DEC 2009	JAN-MAR 2010	APRIL-JUNE 2010	MONTHLY AVE (09/10)
279	275	286	239	269.8



Wiltshire Fire & Rescue Service

Wiltshire and Swindon Fire Authority

Report for Calne Area Board

Fires

It is pleasing to report that WFRS saw a reduction in the number of accidental fires within the Board's area during January and February 2011, attending 4 fires compared to 10 in the previous reporting period.

These incidents have involved a chimney, oven gloves, a microwave oven and a kitchen.

Sadly, we have seen a small increase in the number of deliberate fires that we attended during the same period, from 1 to 3. These incidents involved refuse, a metal container and an outbuilding. WFRS will continue to work with Wiltshire Police and other agencies to identify any persons responsible for deliberate fire setting.

Injuries

There were no fire related injuries reported during this period.

RTC'S

WFRS have attended 3 incidents for January and February 2011, occurring on the A3102, Heddington and Oxford Rd in Calne.

Community Safety

A RECIPE FOR A SAFE KITCHEN

Overheated oil or fat in chip pans, deep fat fryers or grill pans are the main cause of kitchen fires. A moment's distraction and you could find yourself with a serious fire.

SAFE COOKING

- Never fill a pan more than one third full of oil or fat.
- Never leave the pan or grill unattended, when the heat is switched on.
- Never put food in a chip pan if the oil begins to smoke. Turn off the heat and leave the oil to cool, otherwise it can catch fire.
- Clean hobs regularly to prevent a build up of fat which can catch fire.
- Drinking alcohol and cooking is a mix that can end up in disaster.

IF A PAN DOES CATCH FIRE:

- Do not move it - it could cause burns which last a lifetime.
- Turn off the heat if it is safe to do so but never lean over the pan to reach the cooker controls.
- Never throw water on it, this will only make it worse.
- Close the kitchen door on your way out.

CALL THE FIRE & RESCUE SERVICE - we are professionals and have the protective clothing and equipment to tackle the fire safely.

For a full range of home fire safety advice, visit www.wiltfire.gov.uk

This page is intentionally left blank



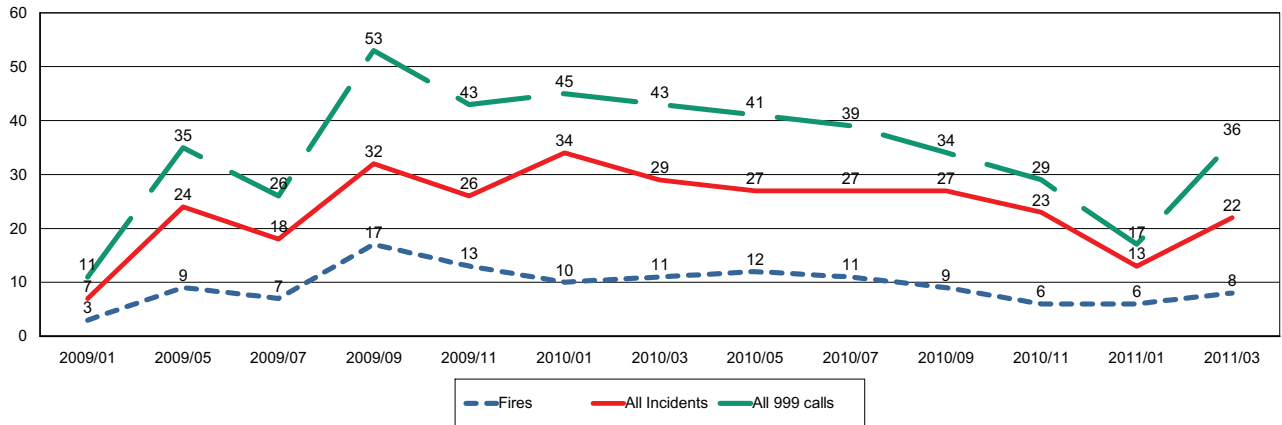
Wiltshire Fire & Rescue Service

Wiltshire and Swindon Fire Authority

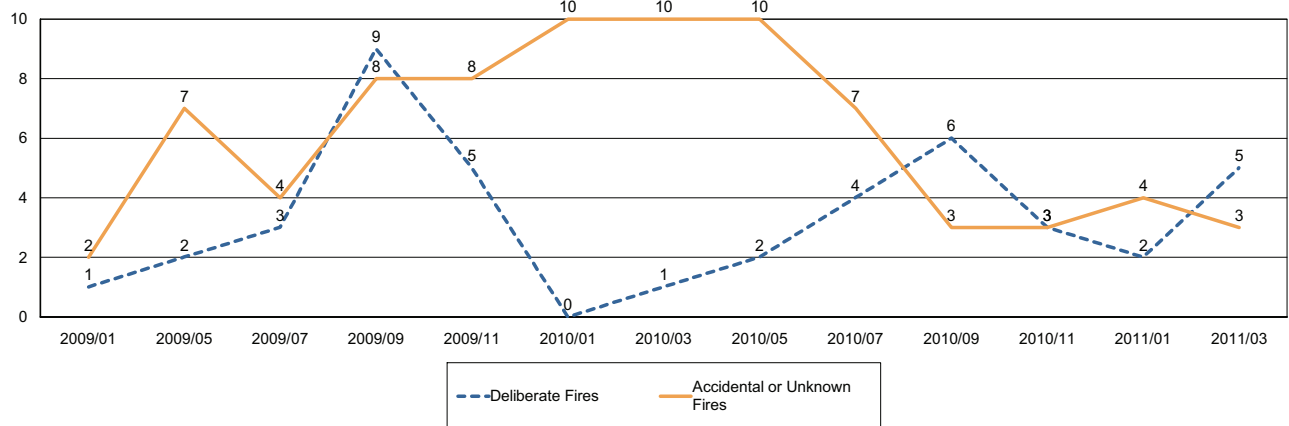
Report for Calne Area Board

The following is a bi-monthly update of Fire and Rescue Service activity up to and including March 2011. It has been prepared by the Group Manager for the Board's area.

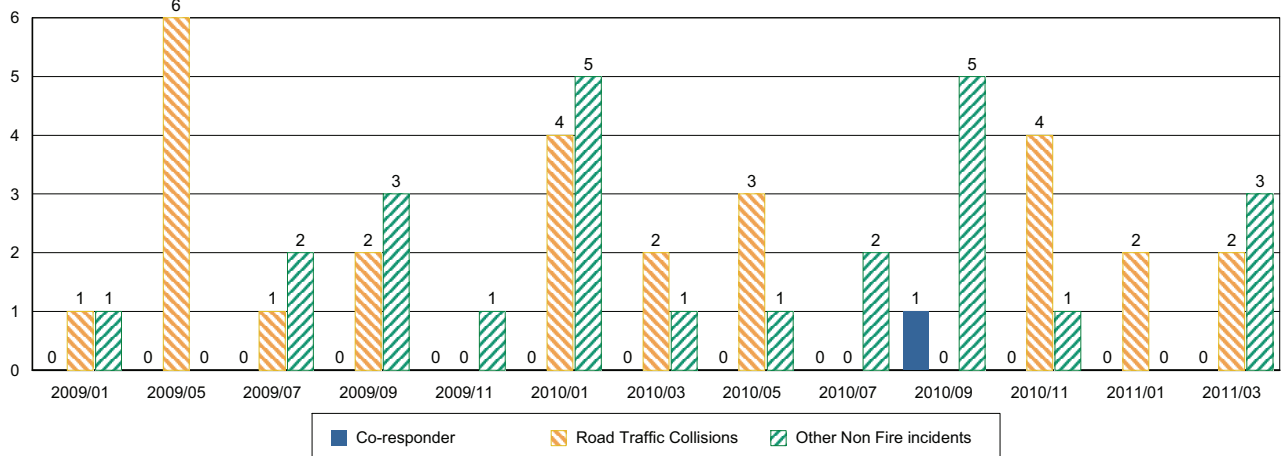
Incidents and Calls



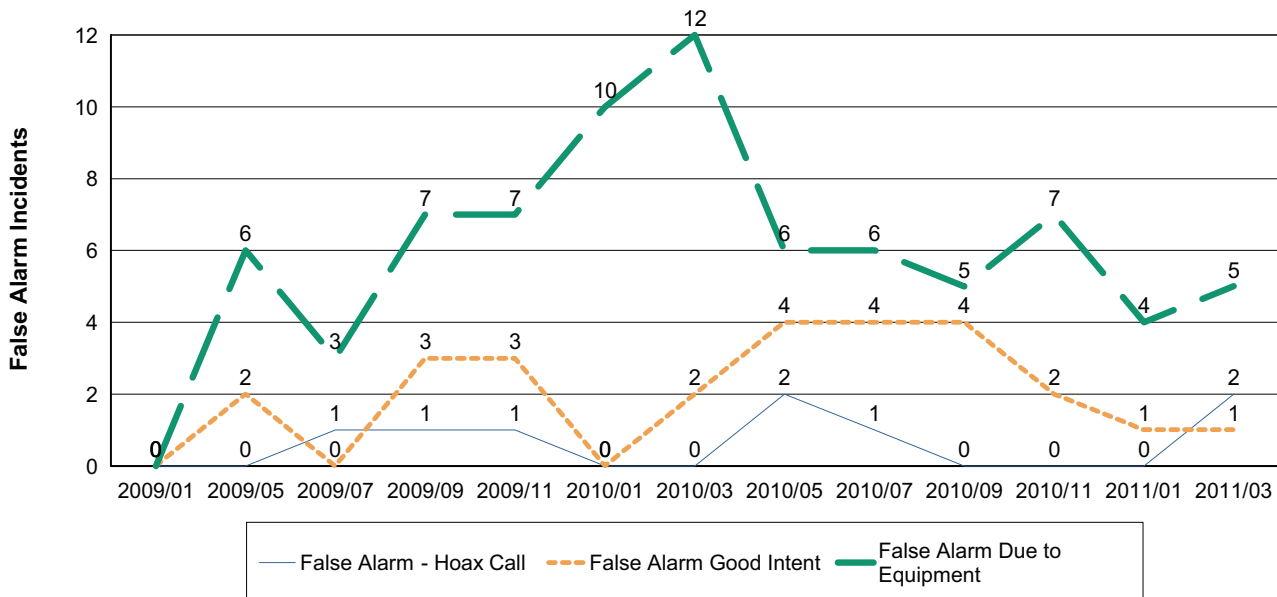
Fires by Cause



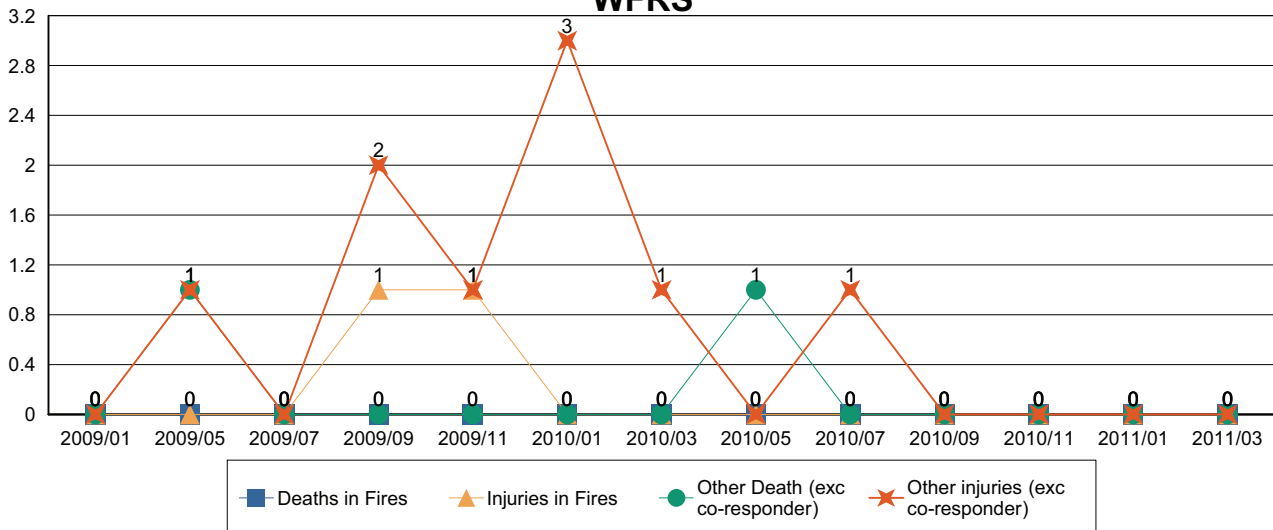
Non-Fire incidents attended by WFRS



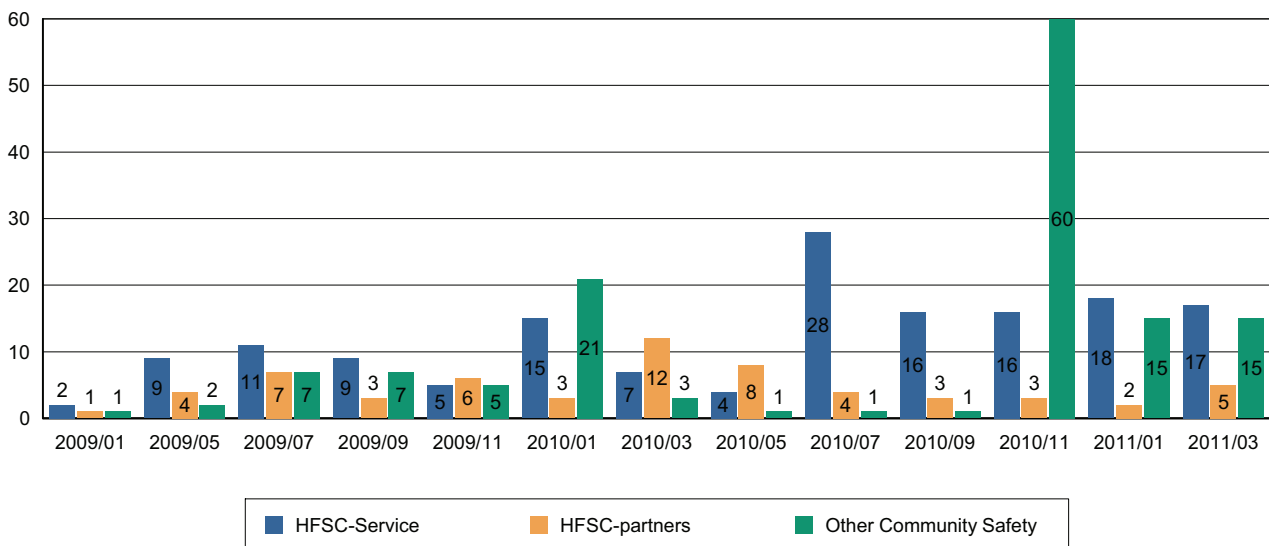
Number of False Alarm Incidents



Death & Injuries in incidents attended by WFRS



Home Fire Safety Checks and other domestic safety



Comments and Interventions overleaf

NHS Update – April 2011

Management cost reductions

NHS Wiltshire has been successful in reducing the number of posts originally identified as being at risk of redundancy from 55 to 25. In addition, a further 19 people have already chosen to leave, or are due to leave NHS employment through an NHS resignation scheme. This means that a total reduction of 44 posts will have been made by 31 March 2011, covering a combination of management and administrative roles.

Health and Wellbeing Boards lead the way in the South West

Care Services Minister Paul Burstow unveiled that all local authorities in the South West have signed up to be early implementers of new cross-working boards. This means patients and the public can expect a more joined-up service from the NHS and local councils in the future as part of broader plans to modernise the NHS.

All 15 local authorities covering the South West have signed up to join a network of early implementers for health and wellbeing boards that will strip away divisions between the NHS and local authorities. This will give communities a greater say in the services needed to provide care for local people and to tackle the wider influencers of health such as transport, housing and leisure services.

Devizes Health Clinic

The decision to transfer services from Devizes Health Centre to Devizes Community Hospital was taken at NHS Wiltshire's Public Board Meeting in March 2010, as part of the PCT's long-standing plan for primary health care in Devizes.

Patients who use Devizes Health Clinic know that the building is in a certain state of disrepair; it therefore makes sense to dispose of the property so that we can keep and improve the ones that are sustainable to meet the needs of patients and staff. We plan to move the services from the Health Clinic to the hospital within the 2010/11 financial year and are currently planning the room configurations for services in the hospital so that services can be provided there from mid-April, located in the area which was previously used as the maternity wing.

All the services currently provided at the Health Clinic – the Health Visitor Service, the Emergency Dental Access service, podiatry, paediatric clinic and continence service - will move over to the hospital. There are no plans to begin marketing the Health Clinic site at any stage before the transfer of any service is complete. NHS Wiltshire will report any contract for the sale or lease of Devizes Health Clinic as a matter of public record in the usual way, which is through the Register of Sealings in its public Board Meetings.

GP Practice merger proposed

Plans for two Trowbridge GP practices - Bradford Road Medical Centre and Adcroft Surgery – to merge and co-locate in improved premises were announced at Trowbridge Area Board meeting on Thursday 17 March 2011.

The proposed GP-led Primary Care Development will provide flexible accommodation to enable GPs to provide a robust service with resources to deal with the future challenges of providing NHS care to patients.

Part of the development will be on land owned by NHS Wiltshire, which is currently used under licence by Trowbridge Cricket Club as a practice pitch. Outline planning permission was granted to the Primary Care Trust in February 2010 for the development of the land, and the area required for the Primary Care Development will now be sold to the GP practices in order for the new premises to be built.

The new building will consist of a two-story extension to the existing Adcroft Surgery premises, with additional car parking, an access road and a pharmacy building. Pedestrian access will also be possible from Adcroft Street through the Trowbridge Community Hospital site. The total premises size, including the existing Adcroft premises, will be approximately 1700 square meters. Car parking will be vastly improved, with a total of 108 spaces (30 existing, 78 new), and a new road from Seymour Road across the site will further improve access for patients.

Services offered at the development will include:

- A diagnostics 'pad', which will allow mobile units to provide breast screening and MRI screening
- An ambulance stand-by point in the car park
- An on-site pharmacy
- An on-site dental practice with an NHS dental contract

The development will be funded by the two practices, with an £87,500 annual investment from NHS Wiltshire.

Help for Adults with Eating Disorders in Wiltshire

NHS Wiltshire has commissioned a new Wiltshire service for Adults with Eating Disorders which will begin on 1st May 2011. The contract for the service, to be provided by Oxford Health NHS Foundation Trust, is for a period of three years.

Oxford Health NHS Foundation Trust has two specialist Eating Disorders Inpatient units – Cotswold House Oxford and Cotswold House Marlborough - the 12-bedded inpatient Unit based at Savernake Hospital. The new service will provide a full range of interventions, all based in Wiltshire so it is easier for patients to be treated closer to home. A website will offer guidance and advice for patients, carers and professionals and a multidisciplinary team will work with patients in the community. Those requiring treatment as day patients will be able to attend Cotswold House, Marlborough for one to seven days per week depending on their needs, which will help minimise disruption to employment, education or training. Inpatient treatment will be provided for the most unwell patients. The specialist unit based at Savernake Hospital has 12 en-suite bedrooms, day areas, a garden area and a suite of rooms for therapeutic activities. The inpatient team will working closely with community staff and inpatient teams will reduce emergency admissions to general hospitals. For patients with eating disorders who do require general hospital care for any reason, a specialist liaison service will be available.

Next NHS Wiltshire Board Meeting

The next Board meeting of NHS Wiltshire will be held on **Wednesday 18 May at 10am - 2011 at Southgate House**. Members of the public are welcome to attend. Papers are published a week before the meeting on www.wiltshire.nhs.uk or on request from Stacey Saunders, NHS Wiltshire (tel: 01380 733839, email: stacey.saunders@wiltshire.nhs.uk). For further information or copies of documents referred to above, please email communications@wiltshire.nhs.uk



CALNE COMMUNITY AREA PARTNERSHIP

Calne Area Board Update for Tuesday 19th. April 2011

Genera

- It is hoped to produce a leaflet to publicise the Partnership in the near future
- The Culture theme group has met again to foster a closer co-ordination and promotion of the many cultural events in Calne during the year.
- The Community Plan Update has now been distributed widely and if anyone would like to receive copies of the Plan Update please contact the Chairperson.
- The Partnership is promoting the sale of Fairtrade products in the Calne Community Area and there will be motions of support put to the Calne Town Council and Calne Area Board in April. Fairtrade gives the original producer a fair price for their produce in developing countries.
- The reduction of the use of non recyclable plastic bags is another Partnership promotion with an environmental theme.
- Reduce, Reuse and Recycle is also a Partnership promotion. This has led to the establishment of a collection point at SES Cycles in Wood Street in Calne for the collection of bikes that would otherwise be scrapped. The bikes are collected by a charity Joel Rider and taken to be repaired before being shipped out to the Gambia in West Africa and given to schools in rural areas for the use of students to enable them to get to school more easily.
- Calne Community Cycle will take place on June 18th based at Calne Leisure. There will be an afternoon of fun for all the family and encourage people to "Get on their bikes" It has the support of the Partnership, Sustrans, Calne Town Council, the John Bentley School and the Calne Area Board
- The Education and Lifelong learning group held a meeting to promote and co-ordinate adult education in all venues in the community area including the Community Hub in the future. The positive meeting included representatives from the John Bentley School, the Learning Curve, Wessex Community Action, the Calne CAP and the Community Hub.
- Calne Area Transport volunteers have been working hard to map the various routes in and around Calne to suggest more off road paths which connect footpaths for walker's wheelchair users and cyclists. A report will be presented to the Calne Area Board for action to implement safer routes and maps will be produced.

Calne Community Hub

1. Documents

- Various documents have been produced to monitor and evaluate the use of the Hub as well as a long term business plan required for funding applications.
- Public survey forms have been developed.

2. Funding / Sponsorship

- A local printer has agreed to sponsor 1000 copies of a Hub publicity leaflet
- The total sponsorship has reached £4,500

3. Other

- February Hub usage by individuals increased by 40% and by 78% for organisations since November
- The BBC's 'First Click' programme was extended to 6 weeks for 10 participants
- SureStart would like to have Basic IT courses for young mums offered at the Hub and further training possibilities were identified for anger management and preparation for work. SureStart will provide a 'Working Together' agreement and provide a crèche
- Opportunities for training at the Hub have been investigated with Wessex Community Action the Workers Education Authority and the Learning Curve to provide training at the Hub in the future.
- 2 volunteers have been recruited with skills in research and consultation and in IT
- An inaugural Calne Business Jelly event was held at the Hub and will held monthly
- Funding applications are being made to support the Hub running costs.
- The current main Hub display is for the Calne Area Board for the rest of April

The Community Hub is available for voluntary and statutory organisations and groups to use. It has a good display of "what's on" and information about local groups. It is staffed on Tuesday, Wednesday, Thursday and Friday from 10.00 to 4.00 (Telephone JR Dawson 01249 813747 or thehub2010@hotmail.co.uk)

If you want to find out about how to be involved the Calne Community Partnership drop into the Community Hub in the High Street in the centre of Calne or contact (info@calnecap.org) or check at the website (www.calnecap.org).

David Evans
Calne CAP Chairperson

Friends of Abberd Brook (Thanks to Francis Bosworth for this report)

The pond

The smaller branches near the pond have now been cleared and many positive comments have been made about the improvement. The proposed reed bed plants will be planted later this month. The Friends are currently having plans drawn up to for steps down to the pond for planning consideration and it is hoped that the steps will be completed this summer.

The boardwalk

The extension to the boardwalk will be erected during the week commencing 16th. May.

The underpass

The drawings prepared by Priestley school children under the supervision of Local Artists Gill and David Reeves, have now been agreed a display of the designs are on display in Calne Library during April. The display will transfer to the Heritage Centre in May and workshops will be organised for the public. One of the children came up with the slogan "bringing life back into Abberd Brook together" and this is the slogan for the display.

General

The Friends had a community Spring Clean on March 26th by 18 volunteers who finished the task before 12.00 and the brook is now looking much cleaner

The Friends of Abberd Brook will have a window display at the Community Hub in May.

For more information about the **Friends of Abberd Brook** contact **Francis Bosworth** (fbosworth1@hotmail.com).

Report to	Calne Community Area Board
Date of Meeting	19th April 2011
Title of Report	Community Area Grants
Purpose of Report	
To ask Councillors to consider 1 application seeking 2011/12 Community Area Grant Funding	
 1. Calne Archers - requesting £461.24 towards setting up an archery club. Officers recommend a grant of £462 is awarded.	

1. Background

- 1.1. Area Boards have authority to approve Area Grants under powers delegated to them by the Deputy Leader and Cabinet member for Community Services. Under the Scheme of Delegation Area Boards must adhere to the Area Board Grants Guidance for funding.
- 1.2. In accordance with the Scheme of Delegation, any decision of an Area Board that is contrary to the funding criteria and/or the officer's recommendation would need to demonstrate that the application in question has a wider community benefit, and give specific reasons for why this should justify an exception to the criteria.
- 1.3. The emphasis in the Coalition Government's Localism agenda supports the ethos of volunteering and community involvement. With this in mind Community Area Grants should be encouraged from and awarded to community and voluntary groups.
- 1.4. Area boards will not consider applications from town and parish councils for purposes that relate to their statutory duties or powers that should be funded from the local town/parish precept. However this does not preclude bids from town/parish councils, encouraging community projects that provide new opportunities for local people or those functions that are not the sole responsibility of the town/parish council.
- 1.5. Officers are required to provide recommendations in their report, although the decision to support applications and to what level is made by Wiltshire Councillors on the Area Board.
- 1.6. Funding applications will be considered at every Area Board meeting.
- 1.7. All applicants are encouraged to contact Charities Information Bureau who is working on behalf of Wiltshire Council to support community and voluntary groups, town and parish councils to seek funding for community projects and schemes both from the Area Board and other local and national funding sources.
- 1.8. Paper copies of funding applications will no longer appear as part of the agenda in an attempt to reduce volume of paper used. However, the application forms will be available on the Wiltshire Council web site and hard copies available upon request.
- 1.9. The 2011/2012 funding criteria and application forms are available on the council's website (www.wiltshire.gov.uk/areaboards) or paper versions are available from the Community Area Manager.

Background documents used in the preparation of this Report	<ul style="list-style-type: none"> • Community Area Grant Application Pack 2011/12 • Calne Community Area Plan – 2004-14 (incl. 2006/2010 update)
--	---

2. Main Considerations

- 2.1. Councillors will need to be satisfied that grants awarded in the 2011/12 year are made to projects that can realistically proceed within a year of the award being made.
- 2.2. The funding contained within this report forms the first round of funding during 2011/12.
- 2.3. Future rounds will be considered as follows:
 - 28th June 2011 (deadline for applications – 20th May)
 - 23rd August 2011 (deadline for applications – 15th July)
 - 18th October 2011 (deadline for applications – 9th September)
 - 6th December 2011 (deadline for applications – 4th November)
 - 14th February 2012 (deadline for applications – 3rd January 2012)

3. Environmental & Community Implications

Community Area Grants will contribute to the continuance and/or improvement of cultural, social and community activity and wellbeing in the community area, the extent and specifics of which will be dependent upon the individual project.

4. Financial Implications

- 4.1. Awards must fall within the Area Boards budget allocated to the Calne Community Area Board.
- 4.2. Following awards made to Community projects at the last Calne Area Board of the 2010/11 financial year a balance of £5,344 remained. (appendix 1)
- 4.3. At the meeting of 8th February 2011 the Calne Area Board decided that the remaining sum should be rolled forward to fund projects and initiatives emerging in the 2011/12 financial year.
- 4.4. The total budget for 2011/12 is therefore £48,196
- 4.5. If grants are awarded in line with officer recommendations, the Calne Community Area Board will have a balance of £47,734.

5. Legal Implications

5.1. There are no specific Legal implications related to this report.

6. HR Implications

6.1. There are no specific HR implications related to this report.

7. Equality and Inclusion Implications

7.1. Community Area Grants give all local community and voluntary groups, Town and Parish Councils an equal opportunity to receive funding towards community based projects and schemes.

7.2. Implications relating to individual grant applications are outlined within section 8 – “Officer Recommendations”.

8. Officer recommendations

Ref	Applicant	Project proposal	Funding requested
8.1	Calne Archers	The creation of an archery club for all ages and abilities from the Calne Community Area.	£461.24

8.1.1. It is recommended that the Calne Twinning Association is awarded a grant of £462 towards the creation of an archery club for all ages and abilities from the Community Area.

8.1.2. Officers are of the opinion that this application meets grant criteria for 2011/12.

8.1.3. It can be seen to link with aspirations laid out in the Calne Community Area Plan by providing activities and opportunities for young people.

8.1.4. Volunteers have held taster sessions to identify local interest in the sport within the community using old and borrowed equipment. This resulted in the volunteers being asked to form a formal group.

8.1.5. The club is being supported by Calne Town Council through advice and support of staff at Beversbrook Sports facility.

8.1.6. Local volunteers have already committed to help to run the club and have made voluntary contributions towards attending training courses that will focus upon child protection issues.

- 8.1.7. The group hopes to develop and train volunteers further in order to deliver sessions to other community / youth groups in the community area.
- 8.1.8. This application will enable the group to provide new equipment and will include equipment specifically suitable for people with disabilities.
- 8.1.9. The group is open to everyone and this application also expresses an aspiration to reach out to those people who may be excluded from other sporting activities as a result of physical disabilities.
- 8.1.10. If the Area Board makes a decision not to fund this project it will be delayed while alternative funding is sought.

Appendices:	Appendix 1 Calne Community Area Grants Summary 2010/11 Appendix 2 Grant application – Calne Archers
--------------------	--

No unpublished documents have been relied upon in the preparation of this report.

Report Author	Jane Vaughan, Community Area Manager Tel: 01249 706447 E-mail jane.vaughan@wiltshire.gov.uk
----------------------	--

This page is intentionally left blank

CALNE AREA BOARD

Date	Cabinet Member Attending	Location	Area Board Agenda Items (including officer contact details)	Provisional Items
3 May 2011	Councillor Stuart Wheeler – Leisure, Sport and Culture	Calne Town Hall	Single item agenda: Community campus	
28 June 2011	Councillor Fleur de Rhe-Philippe – Finance, Performance and Risk	Calne Town Hall	Community items: Partner items: Corporate items: Older people's accommodation strategy Nomination of representatives to outside bodies Election of chairman and vice chairman Queen Elizabeth 11 Fields Challenge Community Area Grants will be considered.	
23 August 2011	To be confirmed	Cherhill Village Hall	Community items: Partner items: Corporate items: New waste and recycling collection service Community Area Grants will be considered.	

Community area manager: Jane Vaughan (jane.vaughan@wiltshire.gov.uk)

Democratic services officer: Alexa Smith (alexa.smith@wiltshire.gov.uk)

Service director: Brad Fleet (brad.fleet@wiltshire.gov.uk)

This page is intentionally left blank